

FRITZ HANSEN



DIRECTOR'S CHAIR (OUTDOOR)
PRODUCT FACT SHEET

DIRECTOR'S CHAIR

Director's Chair steps outside in an outdoor-ready design that pairs upholstered comfort with foldable practicality. Available in weather-resistant textile, it brings the familiar silhouette to terraces, gardens and balconies with ease. Crafted in solid teak with brass fittings, it offers the same elegance and functionality as the indoor original.

PRODUCT TYPE

Armchair

ENVIRONMENT

Outdoor

DESIGNER / YEAR OF DESIGN

Skagerak Design

MODELS

Chair

MATERIAL

Wood: Teak (untreated)

Textile:

- Heritage: 50% Sunbrella® Recycled Acrylic, 47% Sunbrella® Acrylic, 3% Sunbrella® Polyester
- Summertime: 100% Solution-dyed polypropylene

Filling: Fast-drying outdoor foam

Fittings: Brass

MATERIALS IN %:

Wood (Teak): 91,5%

Textile: 3,5%

Foam (PU): 1,5%

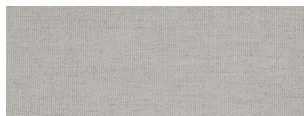
Metal (Brass): 3,5%

FEATURES

- Foldable
- Removable and washable covers

SURFACES

The chair is available in two variants*



HERITAGE, PAPYRUS



SUMMERTIME, NAVY

The bottom seat piece will always be in Papyrus.

MADE-TO-ORDER

N/A

CERTIFICATION

- FSC™ FSC-C120451: The wood used for Director's Chair is FSC-certified (FSC 100%). The FSC-certification ensures the wood is from responsible and environmentally managed forests that preserve the natural surroundings and support the local community.
- OEKO-TEX®: The textile used for Director's Chair is OEKO-TEX® STANDARD 100-certified. Products upholstered with certified textiles are not fully certified themselves. The certification applies only to the upholstery textile, not the entire product. The certification is connected to the supplier of the textile.

For more information about environment and manufacturing processes, please download our environmental information sheet at: fritzhanzen.com

TEST

N/A

SPECIFICATIONS

The fast-drying outdoor foam provides a firm and comfortable seat that retains its shape year after year. The open-cell structure allows both water and air to pass through ensuring the cushion dries exceptionally quickly, even after a heavy downpour. To ensure cushions remain beautiful over time, it is good practice to avoid them being left wet for prolonged periods, e.g., by turning them upright to let water run off or storing them in a dry environment.

WEIGHT

5,8 kg / 12.8 lb

COUNTRY OF ORIGIN

Wood: Indonesia

Textile: Spain

PRE-ASSEMBLED

No

PACKAGING

The chair is shipped in cardboard box. All packaging material can be recycled depending on local capability.

CLEANING AND CARE

Find recommendations for cleaning and care at: fritzhanzen.com/maintenance

*The Director's Chair is not available in UK/IE & US.

REPAIR, DISPOSAL AND REUSE

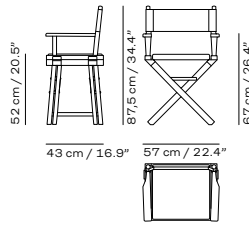
In case of repair and disposal, the chair can be disassembled and replaced/disposed accordingly. Check local regulations for recycling options and whether there is potential for reuse.

WARRANTY

Fritz Hansen provides a five-year warranty on standard products against defects in materials and workmanship.

Additional warranty conditions can be found at:
fritzhanzen.com/warranty

DIMENSIONS



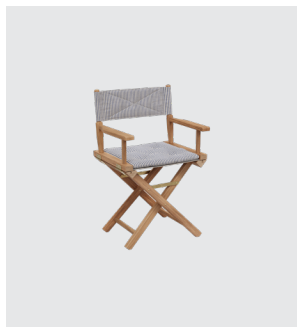
VARIANTS

ARMCHAIR



PAPYRUS (HERITAGE)
1900588

ARMCHAIR



NAVY (SUMMERTIME)
1900589