



&Tradition®

Develius & Develius Mellow
by Edward van Vliet



Develius EV2 3-seater w. deep seat in Cifrado 221 | Sett LN11 in Dark Chrome w. Bianco Carrara | Sett LN12 in Dark Chrome w. Verde Guatemala | Mist AP17

Index

| | |
|----------------------------|----|
| ABOUT THE DESIGNER | 3 |
| DEVELIUS | 4 |
| Upholstery Inspiration | 6 |
| EV1 Low Armrest | 7 |
| EV1 High Armrest | 9 |
| EV2 Deep Seat Low Armrest | 11 |
| EV2 Deep Seat High Armrest | 13 |
| Modules Overview | 15 |
| Configuration Examples | 16 |
| DEVELIUS MELLOW | 17 |
| Upholstery Inspiration | 19 |
| EV8 Low Armrest | 20 |
| EV8 High Armrest | 22 |
| Modules Overview | 24 |
| Configuration Examples | 25 |

Edward van Vliet

Edward van Vliet sees designing as travelling between dreams and reality. Before opening his own studio in 1990, Vliet studied Architecture Design, Interior and Industrial Design at Design Academy Eindhoven and HKU School of Arts. A key player at the vanguard of Dutch design, Vliet transcends aesthetic boundaries by drawing on a global blend of cultural influences. Seen is his array of work from architecture, interiors, furniture, lighting, textiles and lifestyle to destination and experience design.

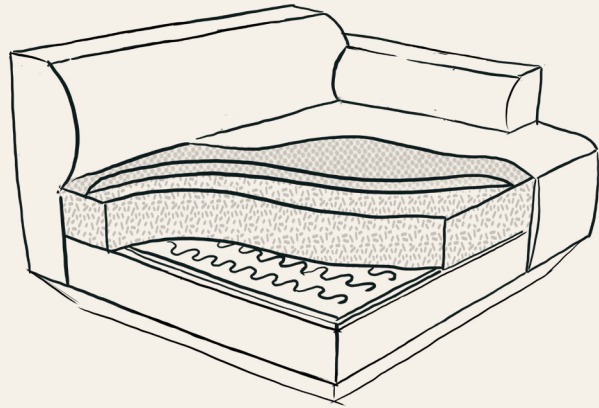
“My work is very much about creating a world within a world,” explains Vliet. “Elegance is all about ambience, setting the stage for people to feel immersed in an atmosphere made personal by distinctive pieces that merge colours, patterns, shapes, materials, moods, emotions, origins and more.”





Develius

Develius is Edward van Vliet's idea of the archetypal modular sofa. Both buildable and versatile, this is a lounge piece that prioritises comfort without sacrificing definitive form and aesthetic. A customisable arrangement of architectural cushions, van Vliet's design tapers inwards at an angle towards the sofa's base to lighten the overall appearance.



Construction of Develius

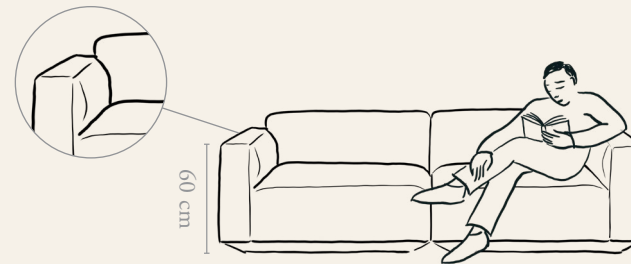
Beneath the Surface

While the lightweight, upper-foam level ensures the sofa is immediately soft to the touch, the heavier-set, lower-foam level keeps Develius' sharp lines and signature form intact. A no-sag spring set provides the light bounce one often expects from a sofa and accommodates further comfort while reinforcing the entire seating area.

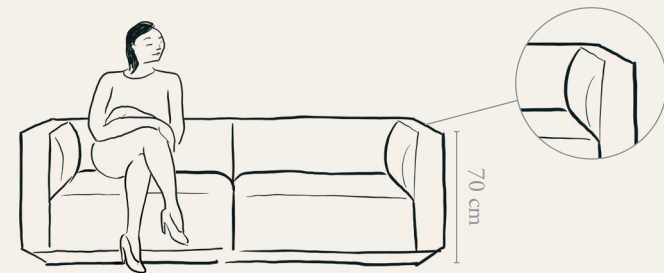
Finally, to make the sofa seem lighter, the base tapers inwards to give a sense of floating.

Modules

When exploring module possibilities, a central element was ensuring that all components could fuse together to create one configuration, allowing for maximum personalisation. Develius' buildable system offers components that range from a pouf, to anywhere between a 1 to 6-seater sofa, a corner sofa and a chaise longue – all of which are available in two depths. The option of keeping the sofas and chaise longue open-ended is also possible, as is choosing from either an informal low-set armrest or the latest addition of a more formal, high-set armrest.



2-seater with low armrests

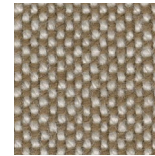


2-seater with high armrests



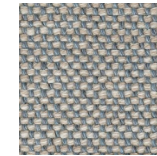
Upholstery Inspiration

Stock



220
Hallingdal

MTO 2-4 weeks*



0003
Clay



94
Hot Madison

*Only for EV1 configurations A-F

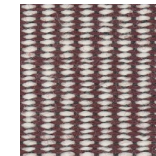
MTO 6-8 weeks



221
Cifrado



0105
Sisu



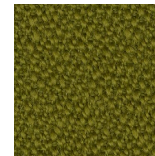
0631
Fuse



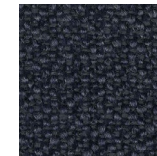
003
Karakorum



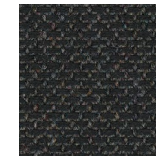
231
Acca



0956
Vidar 4



0780
Ecriture



198
Re-wool



5647
Trend

Also available in below fabrics, leathers & COM

- Hot Madison, Remix, Re-wool
- Canvas, Barnum, Fiord, Ritz
- Clay, Hallingdal, Steelcut Quartet, Steelcut Trio
- Acca, Cifrado, Ecriture, Moss, Uniform Melange, Vidar
- Karakorum, Sisu
- Fuse, Gentle
- Noble Aniline Leather
- COM

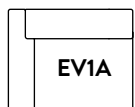
Add-ons



Cable management

EV1 modules ^{EV1A-EV1I} | Low Armrest

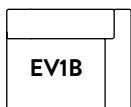
Left armrest



D: 89cm / 35in

W: 110cm / 43.3in

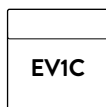
Right armrest



D: 89cm / 35in

W: 110cm / 43.3in

Centre



D: 89cm / 35in

W: 89cm / 35in

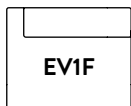
Corner



D: 89cm / 35in

W: 89cm / 35in

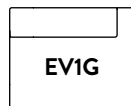
Left open-ended



D: 89cm / 35in

W: 110cm / 43.3in

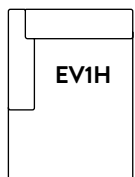
Right open-ended



D: 89cm / 35in

W: 110cm / 43.3in

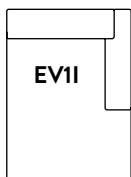
Left chaise longue



D: 150cm / 59in

W: 110cm / 43.3in

Right chaise longue



D: 150cm / 59in

W: 110cm / 43.3in

Pouf



D: 89cm / 35in

W: 89cm / 35in





EV1 configurations ^{A-F} | Low Armrest

Configuration A



D: 89cm / 35in W: 220cm / 86.6in
Hallingdal 220

Configuration B



D: 150cm / 59in W: 220cm / 86.6in
Clay 003

Configuration C



D: 150cm / 59in W: 220cm / 86.6in
Hot Madison 094

Configuration D



D: 89cm / 35in W: 309cm / 121.6in
Hallingdal 220

Configuration E



D: 150cm / 59in W: 309cm / 121.6in
Clay 003

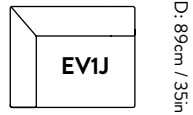
Configuration F



D: 150cm / 59in W: 309cm / 121.6in
Hot Madison 094

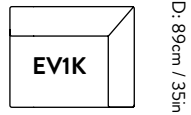
EV1 modules EVIC-EV1G & EV1J-EV1K | High Armrest

Left armrest



W: 110cm / 43.3in

Right armrest



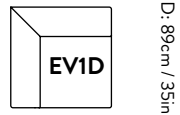
W: 110cm / 43.3in

Centre



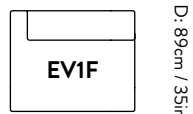
W: 89cm / 35in

Corner



W: 89cm / 35in

Left open-ended



W: 110cm / 43.3in

Right open-ended



W: 110cm / 43.3in

Pouf



W: 89cm / 35in



Develius EV1 2-seater w. high armrest in Hallingdal 130 | Pinwheel HM7 in Oiled Walnut w. Brass | X HM10 | Cruise
AP11 in Bombay Golden Brown



EV1 configuration examples | High Armrest

3-seater



EV1J, EV1C & EV1K
D: 89cm / 35in W: 309cm / 121.6in
Clay 003

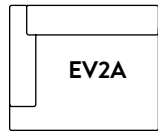
Corner sofa



EV1J, EV1C, EV1D, EV1C & EV1K
D: 309cm / 121.6in W: 309cm / 121.6in
Clay 003

EV2 modules ^{EV2A-EV2G} | Deep Seat Low Armrest

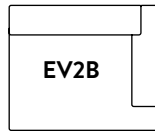
Left armrest



D: 110cm / 43.3in

W: 131cm / 51.6in

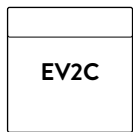
Right armrest



D: 110cm / 43.3in

W: 131cm / 51.6in

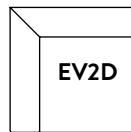
Center



D: 110cm / 43.3in

W: 110cm / 43.3in

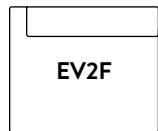
Corner



D: 110cm / 43.3in

W: 110cm / 43.3in

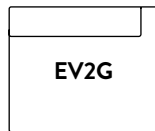
Left open-ended



D: 110cm / 43.3in

W: 131cm / 51.6in

Right open-ended



D: 110cm / 43.3in

W: 131cm / 51.6in

Pouf



D: 110cm / 43.3in

W: 110cm / 43.3in



Develius EV2 3-seater w. deep seat in Vidar 0943 | Trace SC88 in Natural Oak | Tung JA3 in Burgundy Red | X HM10 | Tripod HM8 in Black | Collect Rug SC85 in Milk



EV2 configuration examples | Deep Seat Low Armrest

2-seater



EV2A & EV2B
D: 110cm / 43.3in W: 262cm / 103.2in
Hot Madison 094

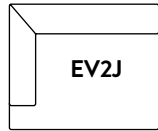
Corner sofa w. open end



EV2F, EV2D, EV2C & EV2B
D: 150cm / 59in W: 309cm / 121.6in
Hallingdal 220

EV2 modules ^{EV2A-EV2G} | Deep Seat High Armrest

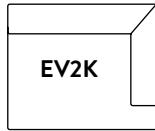
Left armrest



D: 110cm / 43.3in

W: 131cm / 51.6in

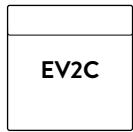
Right armrest



D: 110cm / 43.3in

W: 131cm / 51.6in

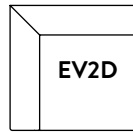
Center



D: 110cm / 43.3in

W: 110cm / 43.3in

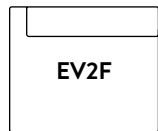
Corner



D: 110cm / 43.3in

W: 110cm / 43.3in

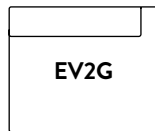
Left open-ended



D: 110cm / 43.3in

W: 131cm / 51.6in

Right open-ended



D: 110cm / 43.3in

W: 131cm / 51.6in

Pouf



D: 110cm / 43.3in

W: 110cm / 43.3in



Develius EV2 2-seater w. high armrest in Karakorom 003 | Pinwheel HM7 in Oiled Oak w. Stainless Steel | X HM10 |
Tripod HM8 in Black | Como SC53 in Red Brown



EV2 configuration examples | Deep Seat High Armrest

2-seater



EV2J & EV2K
D: 110cm / 43.3in W: 262cm / 103.2in
Hot Madison 094

3-seater

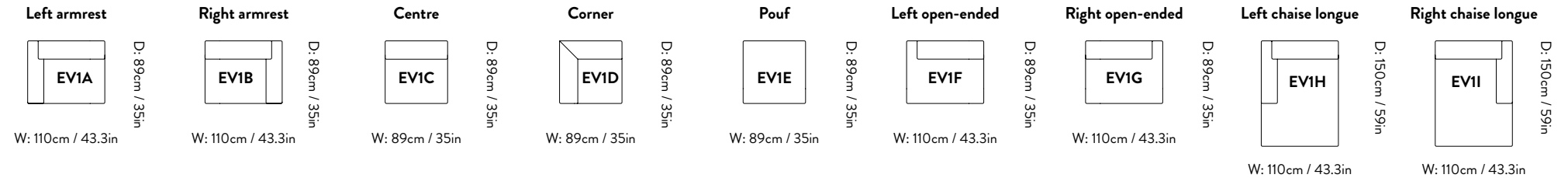


EV2J, EV2C & EV2K
D: 110cm / 43.3in W: 372cm / 146.5in
Hot Madison 094

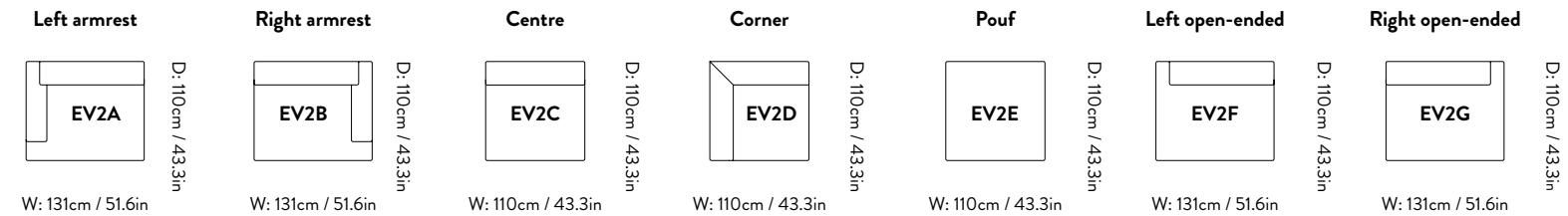
Modules

Develius is a modular sofa system with each module designed to work with one another. Mix and match elements to create your perfect sofa.

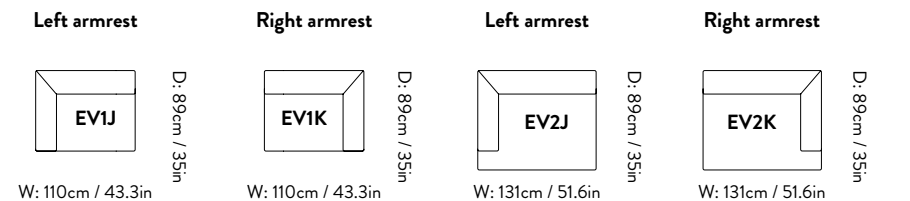
EV1 modules:



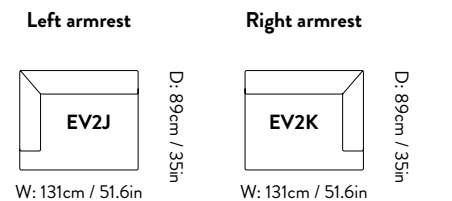
EV2 modules:



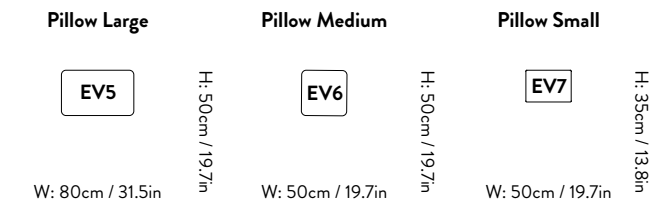
EV1 modules w. high armrest:



EV2 modules w. high armrest:



Pillows:



EV1 modules:

Seating Depth: 64cm / 25.2in
 Seating Height: 42cm / 16.5in
 Armrest Height: 60cm / 23.6in
 Backrest Height: 70cm / 27.6in

EV2 modules:

Seating Depth: 85cm / 33.5in
 Seating Height: 42cm / 16.5in
 Armrest Height: 60cm / 23.6in
 Backrest Height: 70cm / 27.6in

EV1 modules w. high armrest:

Seating Depth: 64cm / 25.2in
 Seating Height: 42cm / 16.5in
 Armrest Height: 70cm / 27.6in
 Backrest Height: 70cm / 27.6in

EV2 modules w. high armrest:

Seating Depth: 85cm / 33.5in
 Seating Height: 42cm / 16.5in
 Armrest Height: 70cm / 27.6in
 Backrest Height: 70cm / 27.6in

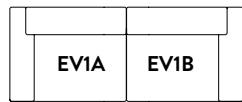
Configuration Examples

Develius offers numerous seating options. Configurations A to J show our recommended setups, whereas the examples below show only the beginning of what can be possible.

EV1 Configurations:

* Configuration A, D, G & H available with high armrest

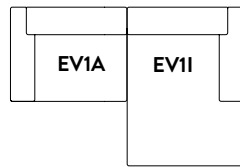
Configuration A



D: 89cm / 35in

W: 220cm / 86.6in

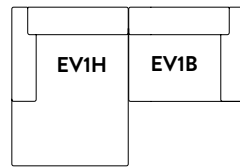
Configuration B



D: 150cm / 59in

W: 220cm / 86.6in

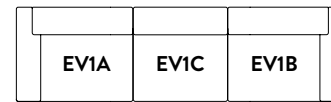
Configuration C



D: 150cm / 59in

W: 220cm / 86.6in

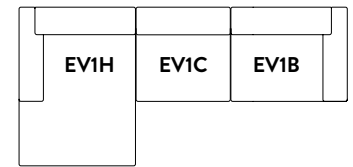
Configuration D



D: 89cm / 35in

W: 309cm / 121.6in

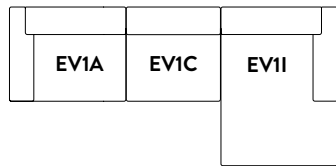
Configuration E



D: 150cm / 59in

W: 309cm / 121.6in

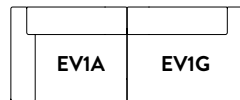
Configuration F



D: 150cm / 59in

W: 309cm / 121.6in

Configuration G



D: 89cm / 35in

W: 220cm / 86.6in

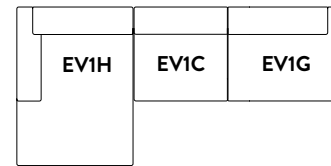
Configuration H



D: 89cm / 35in

W: 220cm / 86.6in

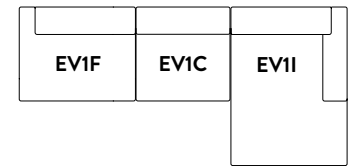
Configuration I



D: 150cm / 59in

W: 309cm / 121.6in

Configuration J



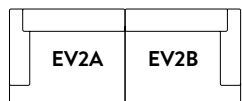
D: 150cm / 59in

W: 309cm / 121.6in

EV2 Configuration examples:

* Also available with high armrest

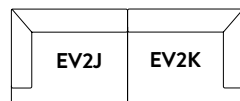
2-seater



D: 110cm / 43.3in

W: 262cm / 103.2in

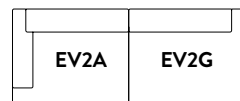
2-seater w. high armrest



D: 110cm / 43.3in

W: 262cm / 103.2in
High armrest

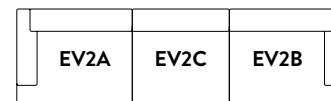
2-seater w. open end



D: 110cm / 43.3in

W: 262cm / 103.2in

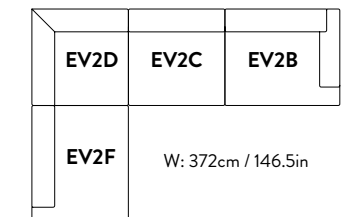
3-seater



D: 110cm / 43.3in

W: 372cm / 146.5in

Corner sofa w. open end



W: 241cm / 94.9in

W: 372cm / 146.5in

Develius Mellow 2-seater EV8H & EV8G in Cifrado 741 | Develius Mellow Pouf EV8E in Cifrado 741 | Sett LN13 in Dark chrome frame w. Smoked cast glass top | Wire stool VP11 | Montera JH42 in Amber & Ruby | Formakami JH3, JH4 & JH5

DEVELIUS MELLOW | MODULAR SOFA



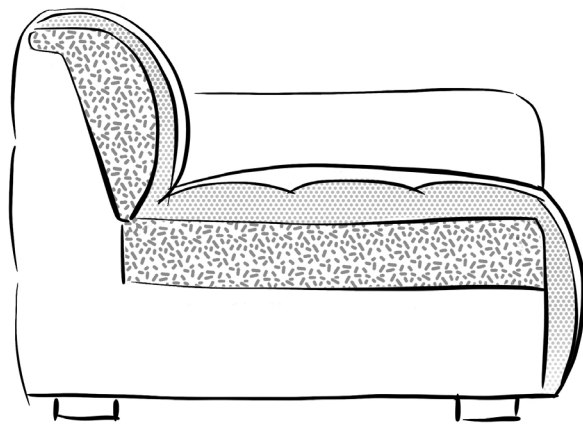
Develius Mellow

An ever-evolving state of lounging, Edward van Vliet's Develius Mellow puts comfort and longevity at the forefront. Following the success of the original Develius design, released in 2018, van Vliet's continuous creative exploration and ambition to create new design environments have resulted in Develius Mellow, a modular sofa with an even softer seating experience and a removable cover.

&Tradition®

Beneath the Surface

Building upon the existing structural framework, which is identifiable in the core Develius family, an additional padded layer sandwiched between Develius Mellow's fabric cover casing creates a soft tier while maintaining the same architectural aesthetic.



Construction of Develius Mellow



2-seater with low armrests

Modules

Develius Mellow, like its predecessor, embraces customisation with an expansive range of fabric and module options. Many of the same buildable components are offered, including a pouf, a 1-6-seater sofa and a corner sofa - in any combination. Similarly, the option of keeping the sofa open-ended is also possible, as is choosing from either a low-set or high-set armrest. The made-to-order piece also features a removable cover that allows owners to extend Mellow's overall lifespan. After many years of good use, when the sofa begins to show signs of natural wear and tear, the cover can be removed and cleaned, or replaced in order to keep your favourite, personalised design.

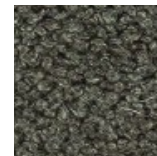


Upholstery Inspiration Develius Mellow

MTO 6-8 weeks



94
Hot Madison



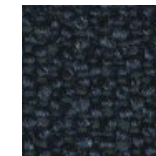
08
Barnum



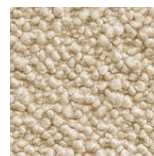
0004
Moss



741
Cifrado



780
Ecriture



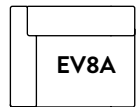
003
Karakorum

Also available in below fabrics & COM

- Hot Madison, Remix, Re-wool
- Canvas, Barnum, Fiord, Ritz
- Clay, Hallingdal, Steelcut Quartet, Steelcut Trio
- Acca, Cifrado, Ecriture, Moss, Uniform Melange, Vidar
- Karakorum, Sisu
- Fuse, Gentle
- COM

EV8 modules ^{EV8A-EV8I} | Low Armrest

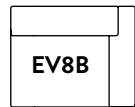
Left armrest



D: 97cm / 38.2in

W: 119cm / 46.9in

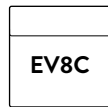
Right armrest



D: 97cm / 38.2in

W: 119cm / 46.9in

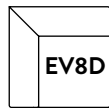
Centre



D: 97cm / 38.2in

W: 97cm / 38.2in

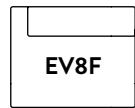
Corner



D: 97cm / 38.2in

W: 97cm / 38.2in

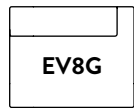
Left open-ended



D: 97cm / 38.2in

W: 119cm / 46.9in

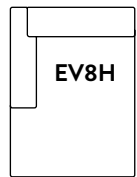
Right open-ended



D: 97cm / 38.2in

W: 119cm / 46.9in

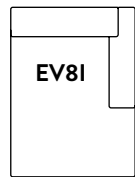
Left chaise longue



D: 150cm / 59in

W: 119cm / 46.9in

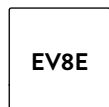
Right chaise longue



D: 150cm / 59in

W: 119cm / 46.9in

Pouf



D: 97cm / 38.2in

W: 97cm / 38.2in



Develius Mellow 3-seater EV8A, EV8C & EV8B in Barnum 08 | Sett LN13 in Dark chrome frame w. Bianco Carrara marble top | AX HM11 in Oak & Dark stained oak | Tripod HM9 in Black | The Moor AP7 in Beige Dew | Setago JH27 in Twilight & Sand



EV8 configurations ^{A-F} | Low Armrest

Configuration A



D: 97cm / 38.2in W: 238cm / 93.8in
Barnum 08

Configuration B



D: 150cm / 59in W: 238cm / 93.8in
Cifrado 741

Configuration C



D: 150cm / 59in W: 238cm / 93.8in
Karakorum 003

Configuration D



D: 97cm / 38.2in W: 335cm / 132in
Barnum 08

Configuration E



D: 150cm / 59in W: 335cm / 132in
Cifrado 741

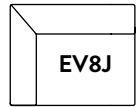
Configuration F



D: 150cm / 59in W: 335cm / 132in
Karakorum 003

EV8 modules EV8C-EV8G & EV8J-EV8K | High Armrest

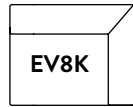
Left armrest



D: 97cm / 38.2in

W: 119cm / 46.9in

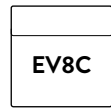
Right armrest



D: 97cm / 38.2in

W: 119cm / 46.9in

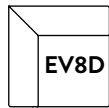
Centre



D: 97cm / 38.2in

W: 97cm / 38.2in

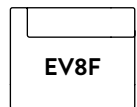
Corner



D: 97cm / 38.2in

W: 97cm / 38.2in

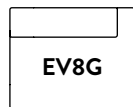
Left open-ended



D: 97cm / 38.2in

W: 119cm / 46.9in

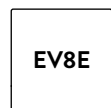
Right open-ended



D: 97cm / 38.2in

W: 119cm / 46.9in

Pouf



D: 97cm / 38.2in

W: 97cm / 38.2in





EV8 configuration examples | High Armrest

2-seater



EV8J & EV8K
D: 97cm / 38.2in W: 238cm / 93.8in
Cifrado 741

3-seater

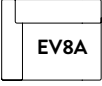
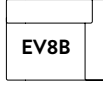
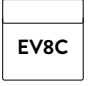




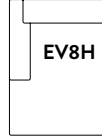
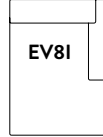


EV8J, EV8C & EV8K
D: 97cm / 38.2in W: 335cm / 132in
Cifrado 741

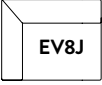
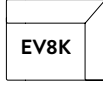
Develius Mellow Modules

Develius Mellow is a modular sofa system with each module designed to work with one another. Mix and match elements to create your perfect sofa.




EV8 modules:

| | | | | | | | | |
|---|---|---|---|---|---|---|---|---|
| Left armrest | Right armrest | Centre | Corner | Pouf | Left open-ended | Right open-ended | Left chaise longue | Right chaise longue |
|  |  |  |  |  |  |  |  |  |
| W: 119cm / 46.9in D: 97cm / 38.2in | W: 119cm / 46.9in D: 97cm / 38.2in | W: 97cm / 38.2in D: 97cm / 38.2in | W: 97cm / 38.2in D: 97cm / 38.2in | W: 97cm / 38.2in D: 97cm / 38.2in | W: 119cm / 46.9in D: 97cm / 38.2in | W: 119cm / 46.9in D: 97cm / 38.2in | W: 119cm / 46.9in D: 150cm / 59in | W: 119cm / 46.9in D: 150cm / 59in |

EV8 modules w. high armrest:

| | |
|---|---|
| Left armrest | Right armrest |
|  |  |
| W: 119cm / 46.9in D: 97cm / 38.2in | W: 119cm / 46.9in D: 97cm / 38.2in |

Pillows:

| | | |
|---|---|---|
| Pillow Large | Pillow Medium | Pillow Small |
|  |  |  |
| W: 80cm / 31.5in H: 50cm / 19.7in | W: 50cm / 19.7in H: 50cm / 19.7in | W: 50cm / 19.7in H: 35cm / 13.8in |

EV8 modules:

Seating Depth: 65cm / 25.6in
Seating Height: 44cm / 17.3in
Armrest Height: 60cm / 23.6in
Backrest Height: 72cm / 28.3in

EV8 modules w. high armrest:

Seating Depth: 65cm / 25.6in
Seating Height: 44cm / 17.3in
Armrest Height: 72cm / 28.3in
Backrest Height: 72cm / 28.3in

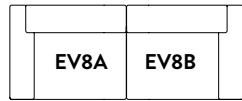
Develius Mellow Configuration Examples

Develius offers numerous seating options. Configurations A to J show our recommended setups. Speak to your sales responsible if you would like to explore other configurations.

EV8 Configurations:

* Configuration A, D, G & H available with high armrest

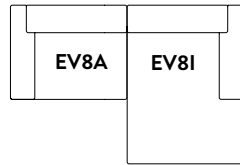
Configuration A



D: 97cm / 38.2in

W: 238cm / 93.8in

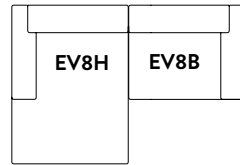
Configuration B



D: 150cm / 59in

W: 238cm / 93.8in

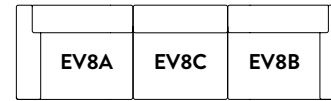
Configuration C



D: 150cm / 59in

W: 238cm / 93.8in

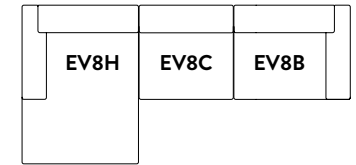
Configuration D



D: 97cm / 38.2in

W: 335cm / 132in

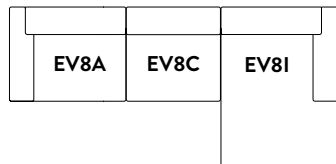
Configuration E



D: 150cm / 59in

W: 335cm / 132in

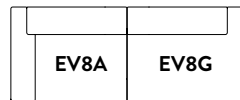
Configuration F



D: 150cm / 59in

W: 335cm / 132in

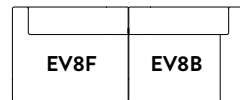
Configuration G



D: 97cm / 38.2in

W: 238cm / 93.8in

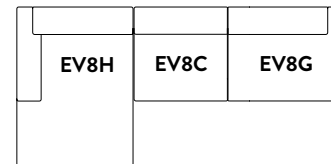
Configuration H



D: 97cm / 38.2in

W: 238cm / 93.8in

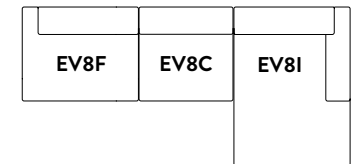
Configuration I



D: 150cm / 59in

W: 335cm / 132in

Configuration J



D: 150cm / 59in

W: 335cm / 132in



With a passionate approach to masterly design, we preserve icons of the past whilst creating the classics of tomorrow, bringing you a collection infused with enduring qualities that work to connect people and places.

Always respectfully, always made to last.